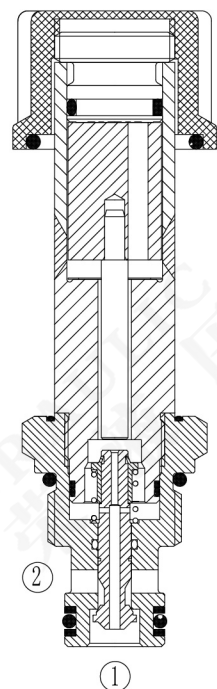


电磁开关阀 Electromagnetic On-Off Valves

型号Model: JSD06-01



描述Description

电磁驱动、两通、座阀式、双向截止、液压螺纹插装阀，用于要求低泄漏的负载保持应用。

Electromagnetic drive, two-way, seated valve, two-way cut-off, hydraulic threaded cartridge valve, for load maintenance applications requiring low leakage.

工作原理Operation

当电磁铁不通电时，截止油液双向流动。

当电磁铁通电时，阀芯打开，允许油液从2流向1，以及从1流向2。

When the electromagnet is not energized, the bidirectional flow of oil is cut off. When the electromagnet is energized, the spool opens, allowing oil to flow from 2 to 1 and from 1 to 2.

特点Features

- 额定电线圈适合连续工作。
- 可选线圈电压和终端。
- 可以对所有油口完全加压。
- 高效湿式衔铁结构。
- 阀芯和阀套硬质处理、耐用。
- 工业通用插孔。
- 结构紧凑。
- Rated electric coils are suitable for continuous operation.
- Optional coil voltage and terminal.
- All oil ports can be fully pressurized.
- Efficient wet armature structure.
- The valve core and valve sleeve are hard to handle and durable.
- Industrial universal jack.
- Compact structure.

技术参数Specifications

最高工作压力: 350bar (5075psi)

流量: 参见性能曲线

内泄漏量: 在350bar时, 泄漏量 ≤ 1mL/min

工作电压: 12VDC、24VDC、110VAC、220VAC

最小工作电压: 正常电压85%

过滤精度: 20 μm

使用温度: -40℃ ~ 120℃ (标准丁腈橡胶)

-26℃ ~ 204℃ (氟橡胶)

介质: 粘度介于7.4 ~ 420cSt (50~2000) ssu的矿物油或具有润滑作用的合成油

Max. Working Pressure: 350bar (5075psi)

Flow: See performance curve.

Internal leakage: At 350bar, the leakage is ≤ 1mL/min.

Working Voltage: 12VDC, 24VDC, 110VAC, 220VAC.

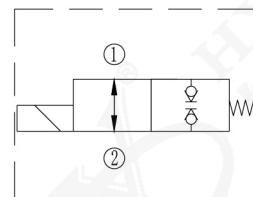
Minimum Working Voltage: 85% of normal voltage.

Filtering Accuracy: 20 μm.

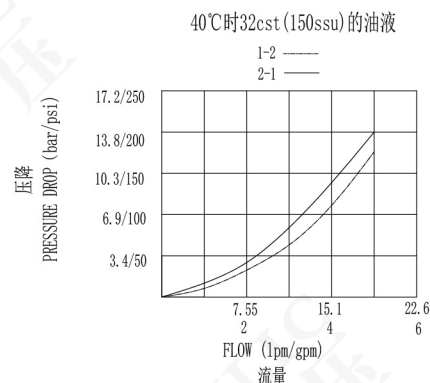
Service Temperature: -40℃ ~ 120℃ (NBR), -26℃ ~ 204℃ (FKM)

Medium: Mineral oil with viscosity of 7.4 ~ 420 CST (50~2000) ssu or synthetic oil with lubricating function.

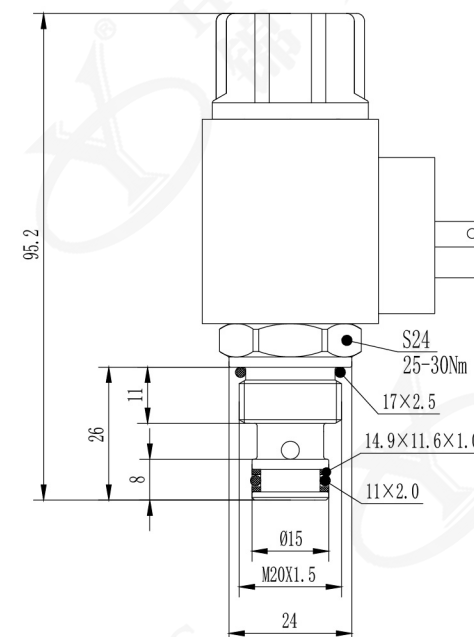
符号Symbol



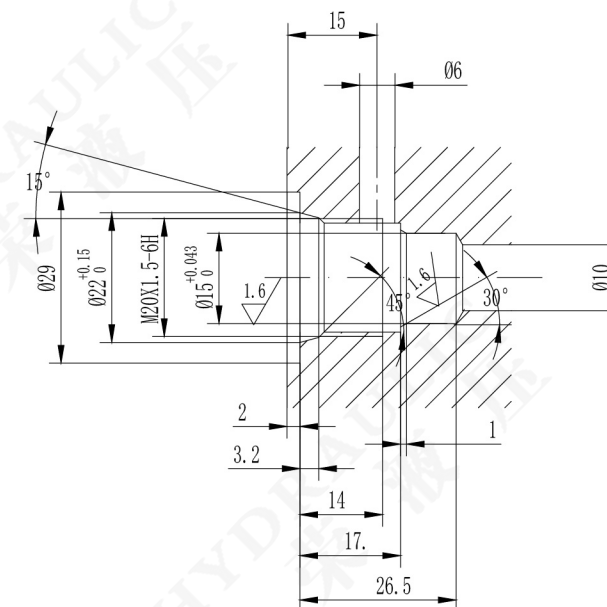
性能曲线Characteristic



安装尺寸Dimensions



插孔Cavity



订购选型To Order

JSD06-01-***-**-*

1

2

3

4

1 型号Model
JSD = 电磁换向阀
Solenoid Operated Valves

2 标准线圈电压Voltage
12 = 12VDC
24 = 24VDC
110 = 110VAC
220 = 220VAC

3 接线形式Coil Connection
DL = 双线Double lead
SL = 单线Single lead
HM = 三插Hirschmann
ER = 德意志插座 (防水线圈)
Deutsch Connector (Water-proof Coil)

4 密封件Seal Kits
N = 丁腈橡胶(NBR)
V = 氟橡胶(FKM)