

## 电磁换向阀，两位三通，滑阀式

### Solenoid Operated Valves, Two-Position Three-Way, Slide Valve Type

型号Model: JSD08-06

#### 描述Description

电磁驱动、两位三通、滑阀式液压螺纹插装阀。

Electromagnetic drive, two-position three-way, slide valve type hydraulic threaded cartridge valve.

#### 工作原理Operation

当电磁铁不通电时，2和3通，和1不通。

当电磁铁通电时，2和1通，和3不通。

When the electromagnet is not energized, 2 and 3 are connected, and 1 is not connected.

When the electromagnet is energized, 2 and 1 are connected, but 3 is not.

#### 特点Features

- 额定线圈适合连续工作。
- 可选线圈电压和终端。
- 可以对所有油口完全加压。
- 高效湿式衔铁结构。
- 阀芯和阀套硬质处理、耐用。
- 工业通用插孔。
- 结构紧凑
- Rated electric coils are suitable for continuous operation.
- Optional coil voltage and terminal.
- All oil ports can be fully pressurized.
- Efficient wet armature structure.
- The valve core and valve sleeve are hard to handle and durable.
- Industrial universal jack.
- Compact structure

#### 技术参数Specifications

最高工作压力: 350bar (5075psi)

流量: 参见性能曲线

内泄漏量: 在210bar时, 泄漏量 $\leq$ 80mL/min

工作电压: 12VDC、24VDC、110VAC、220VAC

最小工作电压: 正常电压85%

过滤精度: 20  $\mu$ m

使用温度: -40 $^{\circ}$ C ~ 120 $^{\circ}$ C (标准丁腈橡胶)

-26 $^{\circ}$ C ~ 204 $^{\circ}$ C (氟橡胶)

介质: 粘度介于7.4~420cSt (50~2000) ssu的矿物油或具有润滑作用的合成油

Max. Working Pressure: 350bar (5075psi)

Flow: See performance curve.

Internal leakage: At 210bar, the leakage is  $\leq$ 80mL/min.

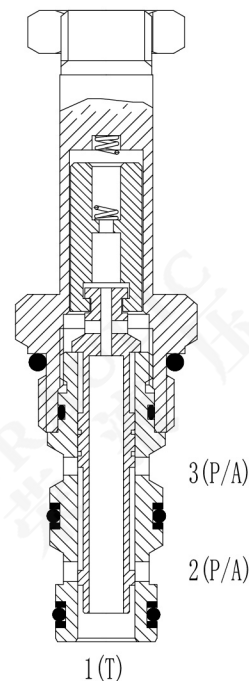
Working Voltage: 12VDC, 24VDC, 110VAC, 220VAC.

Minimum Working Voltage: 85% of normal voltage.

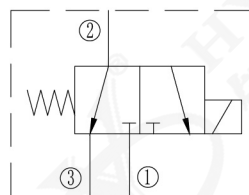
Filtering Accuracy: 20  $\mu$ m.

Service Temperature: -40 $^{\circ}$ C ~ 120 $^{\circ}$ C (NBR), -26 $^{\circ}$ C ~ 204 $^{\circ}$ C (FKM)

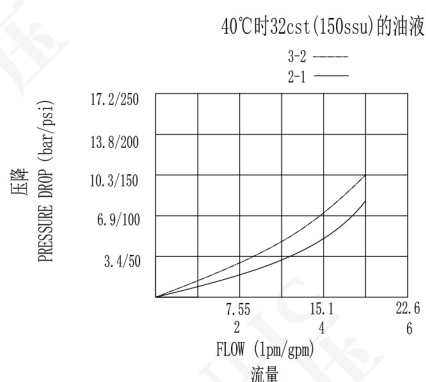
Medium: Mineral oil with viscosity of 7.4 ~ 420 CST (50~2000) ssu or synthetic oil with lubricating function.



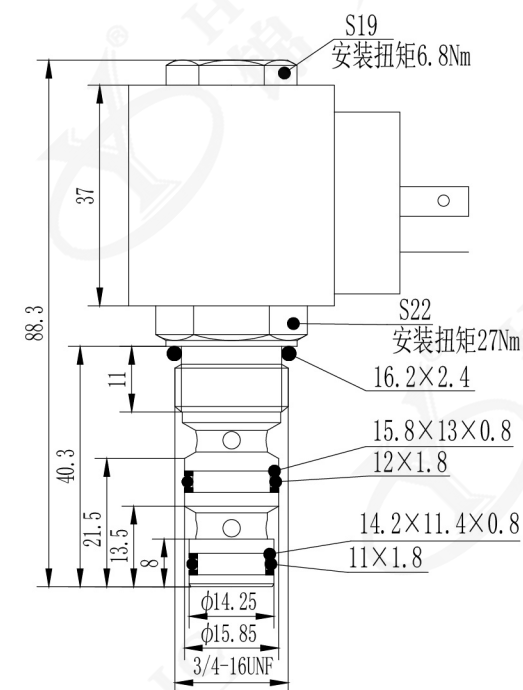
#### 符号Symbol



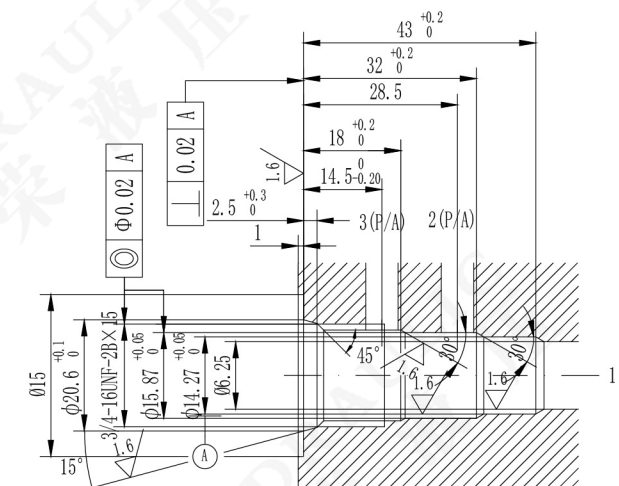
#### 性能曲线Characteristic



#### 安装尺寸Dimensions



#### 插孔Cavity



#### 订购选型To Order

JSD08-06-\*\*\*-\*\*\*-\*

1

2

3

4

1 型号Model  
JSD = 电磁换向阀  
Solenoid Operated Valves

2 标准线圈电压Voltage  
12 = 12VDC  
24 = 24VDC  
110 = 110VAC  
220 = 220VAC

3 接线形式Coil Connection  
DL = 双线Double lead  
SL = 单线Single lead  
HM = 三插Hirschmann  
ER = 德意志插座 (防水线圈)  
Deutsch Connector (Water-proof Coil)

4 密封件Seal Kits  
N = 丁腈橡胶(NBR)  
V = 氟橡胶(FKM)