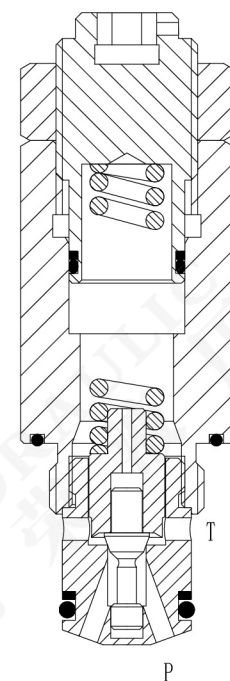


直动式溢流阀 Directly Relief Valves

型号Model: JRD15-03



描述Description

螺纹插装、直动型、座阀式溢流阀，用作限压装置以保护液压回路。
Threaded plug-in, direct-acting and seat-valve overflow valve is used as a pressure limiting device to protect the hydraulic circuit.

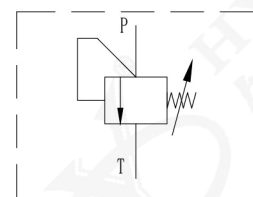
工作原理Operation

当P口压力未达到弹簧设定压力的80%时，P到T不通，超过80%并压力继续升高时，P到T开始溢流，至弹簧的最高设定压力。
When the pressure at the P-port does not reach 80% of the set pressure of the spring, P-to-T is blocked; when it exceeds 80% and the pressure continues to rise, P-to-T begins to overflow to the highest set pressure of the spring.

特点Features

- 调节器确保弹簧不会被压实。 · The regulator ensures that the spring will not be compacted.
- 可选的可选压力范围达230bar (3335psi) 。 · Optional optional pressure range up to 230bar(3335psi).
- 阀芯和阀套硬质处理、耐用。 · The valve core and valve sleeve are hard to handle and durable.
- 压力变化响应快。 · Fast response to pressure change.
- 工业常规阀孔。 · Industrial conventional valve hole.

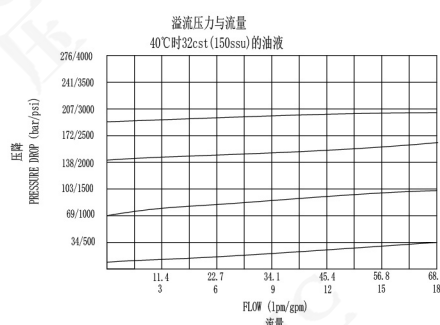
符号Symbol



技术参数Specifications

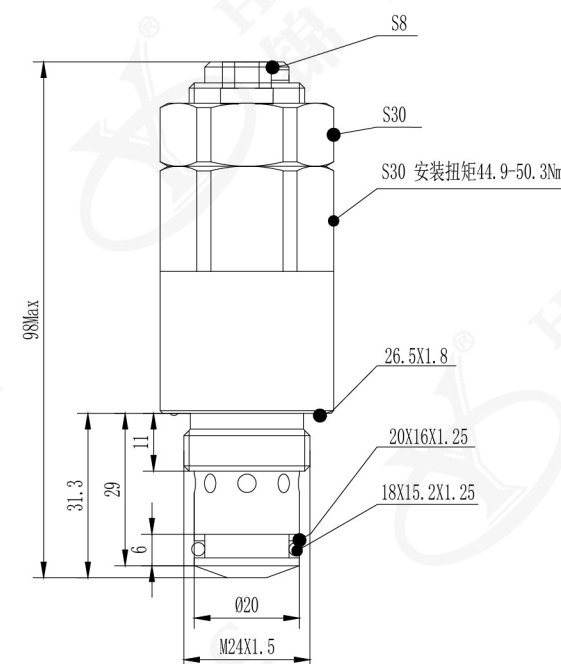
最高工作压力: 240bar (3480psi)
流量: 参见性能曲线
内泄漏量: 在75%的开启压力下, 泄漏量 ≤ 10mL/min
开启压力定义: 当流量达到公称流量的2.5%时的压力测量值bar
闭合压力: 开启压力的90%
过滤精度: 25 μm
使用温度: -40℃ ~ 120℃ (标准丁腈橡胶) -26℃ ~ 204℃ (氟橡胶)
介质: 粘度介于7.4 ~ 420cSt (50-2000) ssu的矿物油或具有润滑作用的合成油
标准压力范围: 10 ~ 50bar (145 ~ 725psi)

性能曲线Characteristic

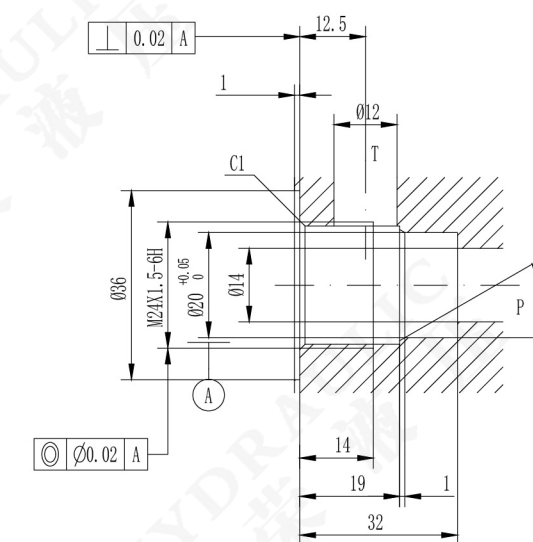


Max. Working Pressure: 240bar (3480psi)
Flow: See performance curve.
Internal leakage: Under the opening pressure of 75%, the leakage is ≤ 10mL/min.
Opening Pressure Definition: Pressure measurement when the flow reaches 2.5% of the nominal flow.
Closing Pressure: 90% of opening pressure
Filtering Accuracy: 25 μm.
Service Temperature: -40℃ ~ 120℃ (NBR), -26℃ ~ 204℃ (FKM)
Medium: Mineral oil with viscosity of 7.4 ~ 420 CST (50-2000) ssu or synthetic oil with lubricating function.
Standard Pressure Range: 10 ~ 50bar (145 ~ 725psi)
55 ~ 120bar (798 ~ 1740psi)
100 ~ 160bar (1450 ~ 2320psi)
160 ~ 240bar (2320 ~ 3480psi)

安装尺寸Dimensions



插孔Cavity



订购选型To Order

JRD15-03- * - * / * - ***

1 2 3 4 5

- 1 型号Model
JRD = 直动式溢流阀
Directly Relief Valves
- 2 调节选件Control
L = 螺杆Screw
C = 防调Anti-adjustment
K = 调扭Torque Adjustment
F = 六角头锁钮
Hexagon Lock Button
O = 螺杆封盖Screw Cap

- 3 弹簧调压范围Spring Ranges
A = 10 ~ 50bar (145 ~ 725psi)
B = 55 ~ 120bar (798 ~ 1740psi)
C = 100 ~ 160bar (1450 ~ 2320psi)
D = 160 ~ 240bar (2320 ~ 3480psi)
- 4 调定压力Setting In Bar
可调节或指定压力, 例如:
190=190bar, 170=170bar
The pressure can be adjusted or specified, Example:
190=190bar, 170=170bar

- 5 密封件Seal Kits
N = 丁腈橡胶(NBR)
V = 氟橡胶(FKM)